

Super Slim

Slim 4mm LED Tape Light

Product Features

1. Slim 4mm LED tape light, use SMD2216 LED.
2. High light efficiency as 100LM/W for 7LEDs design and 85LM/W for 6LEDs design.
3. IP20 and IP54 protection.

EST-FS2216C-266H-24-Y

① ② ③ ④ ⑤

1

LED Type

SMD2216

2

Color

1800 K	2100 K	2300 K	2700 K	3000 K
	3500 K	4000 K	5000 K	6500 K

3

LED Qty. per meter

266 | 264 | 182 | 180
120 | 112

4

Input DC Voltage

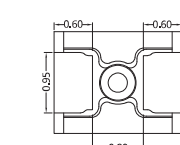
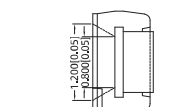
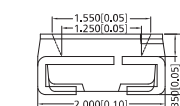
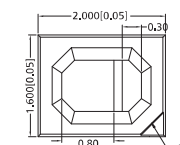
24VDC

5

IP Index

IP20 | IP54 | IP65
IP67 | IP68

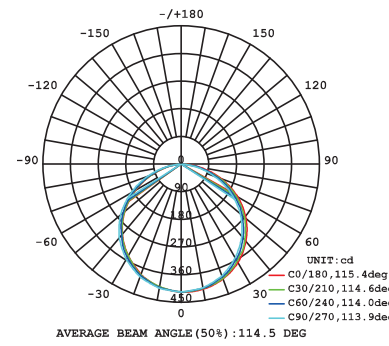
Model	Color temp.	Luminous Flux		I _F	V _F		CRI(Ra)
		Min.	Max.		Current	Max.	
SMD2216 	1800K	7LM	8LM	30mA	3.0V	3.2V	90+
	2100K	7LM	8LM	30mA	3.0V	3.2V	90+
	2300K	7LM	8LM	30mA	3.0V	3.2V	90+
	2700K	8LM	9LM	30mA	3.0V	3.2V	90+
	3000K	9LM	10LM	30mA	3.0V	3.2V	90+
	3500K	9LM	10LM	30mA	3.0V	3.2V	90+
	4000K	10LM	11LM	30mA	3.0V	3.2V	90+
	5000K	10LM	11LM	30mA	3.0V	3.2V	90+
	6500K	10LM	11LM	30mA	3.0V	3.2V	90+



Super Slim 4mm

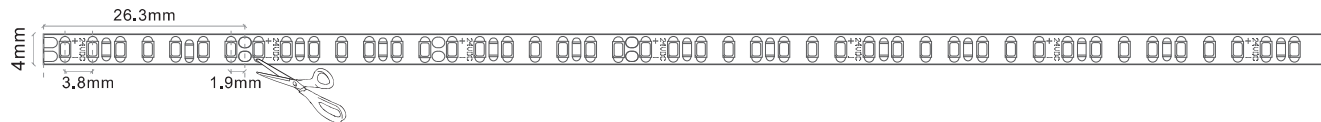
Part Number: EST-FS2216C-266H-24-Y

Model	Color temp.	LM/M	Power/M	Light efficiency	CRI (Ra)	FPC copper
ES-FS2216WW-266H-24-Y	1800K	950LM	<12W	79LM/W	90+	3OZ
ES-FS2216WW-266H-24-Y	2100K	1000LM	<12W	83LM/W	90+	3OZ
ES-FS2216WW-266H-24-Y	2300K	1000LM	<12W	83LM/W	90+	3OZ
ES-FS2216WW-266H-24-Y	2700K	1050LM	<12W	87LM/W	90+	3OZ
ES-FS2216WW-266H-24-Y	3000K	1050LM	<12W	87LM/W	90+	3OZ
ES-FS2216WW-266H-24-Y	3500K	1050LM	<12W	87LM/W	90+	3OZ
ES-FS2216NW-266H-24-Y	4000K	1200LM	<12W	100LM/W	90+	3OZ
ES-FS2216NW-266H-24-Y	5000K	1200LM	<12W	100LM/W	90+	3OZ
ES-FS2216PW-266H-24-Y	6500K	1200LM	<12W	100LM/W	90+	3OZ



Strip length: CE:500CM UL:16.4FT

+24VDC

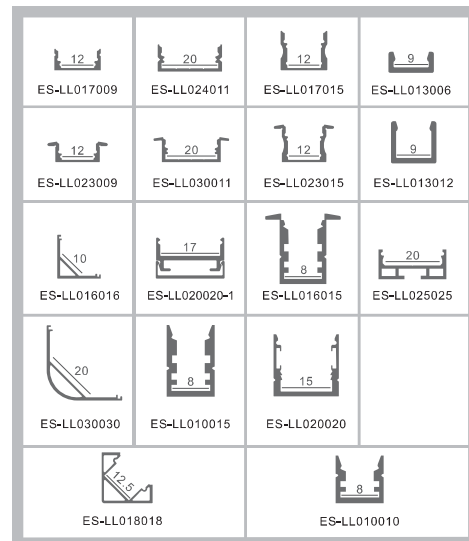


IP Rating:

- IP20---Non waterproof
- IP54---Nano coated



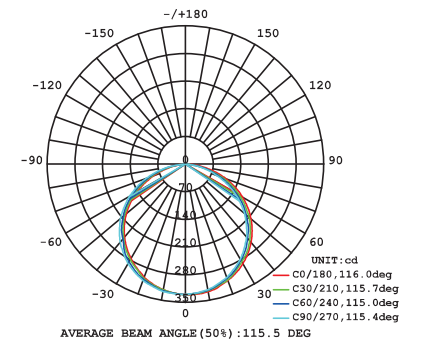
AL. profiles (mm)



Super Slim 4mm

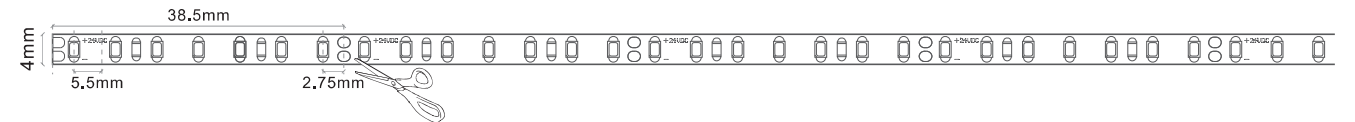
Part Number: EST-FS2216C-182H-24-Y

Model	Color temp.	LM/M	Power/M	Light efficiency	CRI (Ra)	FPC copper
ES-FS2216WW-182H-24-Y	1800K	690LM	<9W	76LM/W	90+	3OZ
ES-FS2216WW-182H-24-Y	2100K	720LM	<9W	80LM/W	90+	3OZ
ES-FS2216WW-182H-24-Y	2300K	720LM	<9W	80LM/W	90+	3OZ
ES-FS2216WW-182H-24-Y	2700K	780LM	<9W	86LM/W	90+	3OZ
ES-FS2216WW-182H-24-Y	3000K	780LM	<9W	86LM/W	90+	3OZ
ES-FS2216WW-182H-24-Y	3500K	780LM	<9W	86LM/W	90+	3OZ
ES-FS2216NW-182H-24-Y	4000K	850LM	<9W	94LM/W	90+	3OZ
ES-FS2216NW-182H-24-Y	5000K	850LM	<9W	94LM/W	90+	3OZ
ES-FS2216PW-182H-24-Y	6500K	850LM	<9W	94LM/W	90+	3OZ



Strip length: CE:500CM UL:16.4FT

+24VDC

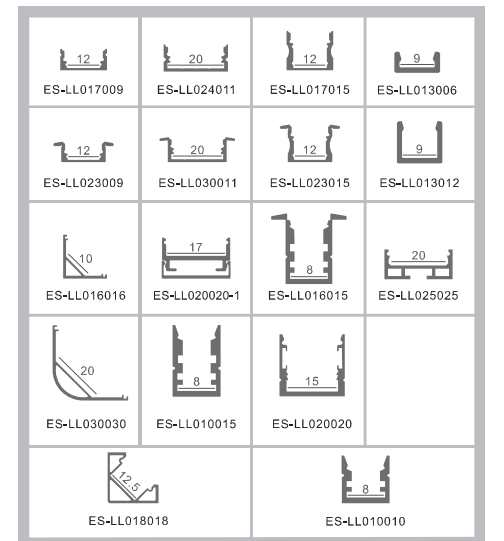


IP Rating:

- IP20---Non waterproof
- IP54---Nano coated



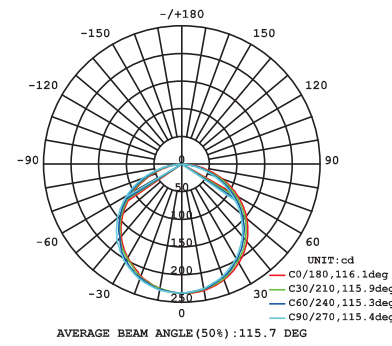
AL. profiles (mm)



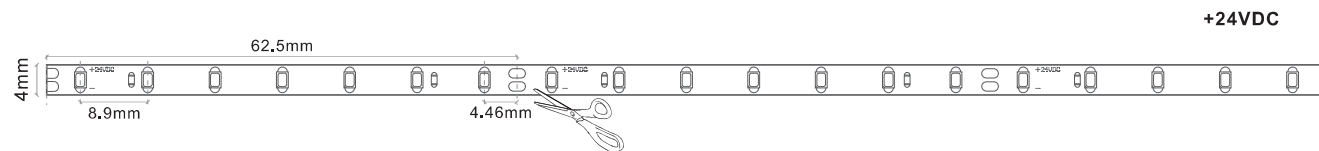
Super Slim 4mm

Part Number: EST-FS2216C-112H-24-Y

Model	Color temp.	LM/M	Power/M	Light efficiency	CRI (Ra)	FPC copper
ES-FS2216WW-112H-24-Y	1800K	570LM	<7.2W	79LM/W	90+	3OZ
ES-FS2216WW-112H-24-Y	2100K	600LM	<7.2W	83LM/W	90+	3OZ
ES-FS2216WW-112H-24-Y	2300K	600LM	<7.2W	83LM/W	90+	3OZ
ES-FS2216WW-112H-24-Y	2700K	620LM	<7.2W	86LM/W	90+	3OZ
ES-FS2216WW-112H-24-Y	3000K	620LM	<7.2W	86LM/W	90+	3OZ
ES-FS2216WW-112H-24-Y	3500K	620LM	<7.2W	86LM/W	90+	3OZ
ES-FS2216NW-112H-24-Y	4000K	680LM	<7.2W	94LM/W	90+	3OZ
ES-FS2216NW-112H-24-Y	5000K	680LM	<7.2W	94LM/W	90+	3OZ
ES-FS2216PW-112H-24-Y	6500K	680LM	<7.2W	94LM/W	90+	3OZ



Strip length: CE:500CM UL:16.4FT



IP Rating:

- IP20---Non waterproof
- IP54---Nano coated



AL. profiles (mm)

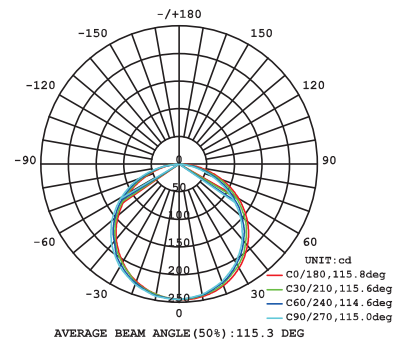
ES-LL017009	ES-LL024011	ES-LL017015	ES-LL013006
ES-LL023009	ES-LL030011	ES-LL023015	ES-LL013012
ES-LL016016	ES-LL020020-1	ES-LL016015	ES-LL025025
ES-LL030030	ES-LL010015	ES-LL020020	
ES-LL018018	ES-LL010010		



Super Slim 4mm

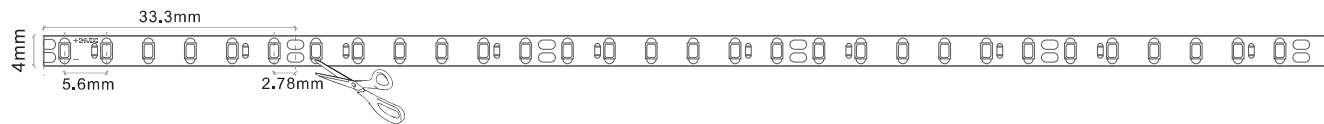
Part Number: EST-FS2216C-180-24-Y

Model	Color temp.	LM/M	Power/M	CRI (Ra)	FPC copper
ES-FS2216WW-180-24-Y	1800K	600LM	<9W	90+	3OZ
ES-FS2216WW-180-24-Y	2100K	630LM	<9W	90+	3OZ
ES-FS2216WW-180-24-Y	2300K	630LM	<9W	90+	3OZ
ES-FS2216WW-180-24-Y	2700K	680LM	<9W	90+	3OZ
ES-FS2216WW-180-24-Y	3000K	680LM	<9W	90+	3OZ
ES-FS2216WW-180-24-Y	3500K	680LM	<9W	90+	3OZ
ES-FS2216NW-180-24-Y	4000K	760LM	<9W	90+	3OZ
ES-FS2216NW-180-24-Y	5000K	760LM	<9W	90+	3OZ
ES-FS2216PW-180-24-Y	6500K	778LM	<9W	90+	3OZ



Strip length: CE:500CM UL:16.4FT

+24VDC

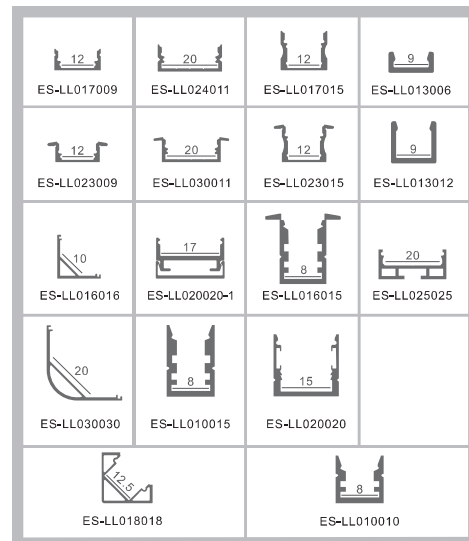


IP Rating:

- IP20---Non waterproof
- IP54---Nano coated



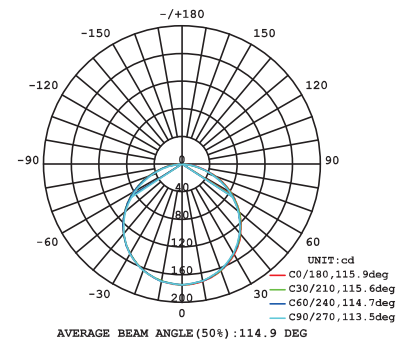
AL. profiles (mm)



Super Slim 4mm

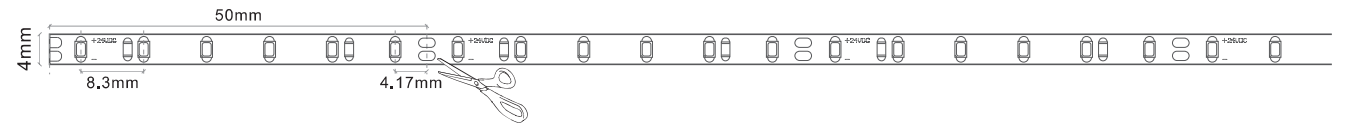
Part Number: EST-FS2216C-120-24-Y

Model	Color temp.	LM/M	Power/M	CRI (Ra)	FPC copper
ES-FS2216WW-120-24-Y	1800K	500LM	<7.2W	90+	3OZ
ES-FS2216WW-120-24-Y	2100K	540LM	<7.2W	90+	3OZ
ES-FS2216WW-120-24-Y	2300K	540LM	<7.2W	90+	3OZ
ES-FS2216WW-120-24-Y	2700K	573LM	<7.2W	90+	3OZ
ES-FS2216WW-120-24-Y	3000K	573LM	<7.2W	90+	3OZ
ES-FS2216WW-120-24-Y	3500K	573LM	<7.2W	90+	3OZ
ES-FS2216NW-120-24-Y	4000K	600LM	<7.2W	90+	3OZ
ES-FS2216NW-120-24-Y	5000K	600LM	<7.2W	90+	3OZ
ES-FS2216PW-120-24-Y	6500K	620LM	<7.2W	90+	3OZ



Strip length: CE:500CM UL:16.4FT

+24VDC



IP Rating:

- IP20---Non waterproof
- IP54---Nano coated



AL. profiles (mm)

