



# SILICONE NEON STRIP

PRODUCT SPECIFICATION

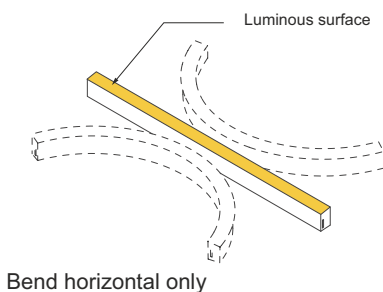
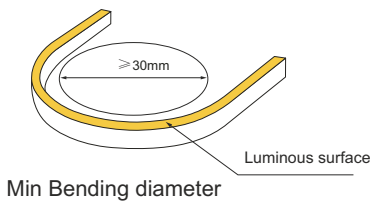
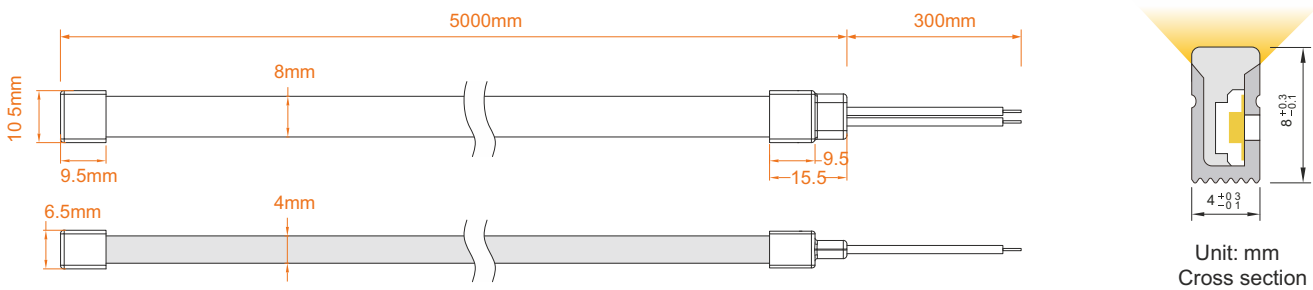
**RLLNFSB0408**

**Side Bend**



- It is made of Dow Chemical SILASTIC™ ET 7021 silicone rubber, which provides high transparency and high strength;
- Environmental protection grade silicone material, integrated extrusion molding process;
- Unique optical light distribution structure design, uniform lighting surface and no shadow;
- IP65 protection level, salt solution resistance, acids & alkalis and UV resistance;
- Excellent toughness, simple and stylish appearance, delicate and unique;
- 3 years warranty, working life  $\geq 30000$  hours

### Dimension structure



### Electrical Parameter

Voltage	DC24V
LED PIN Temperature	Max. 65 °C
Storage Temperature	25 °C ~ 60 °C
Ambient Temperature	Min. 25 °C Max ( Table below )
CRI	>90

### Specification

Power(w/m)	6w/m
Efficacy(lm/w)@4000K	58.8lm/w
Max Ambient Temperature	55 °C

Due to the tolerance of the production and electrical components, output value and electrical power can vary up to 10%.

### Length Standard

Length Range (M)	0M < Neon Strip(L) ≤ 5M
Final Length	L+8
Tolerance	±7



### Single color (Lm/m)

CCT(K)	CRI	Voltage	Power(W)	Lumen (LM/M)	Efficiency (LM/W)	Unit Length (mm)	Max. Run Length (M)	CC/CV
2100K <sup>+200</sup> <sub>-100</sub>	≥90	DC24V	6	199.2	33.2	25	5	CV
2400K <sup>+200</sup> <sub>-100</sub>	≥90	DC24V	6	211.8	35.3	25	5	CV
2600K <sup>+200</sup> <sub>-200</sub>	≥90	DC24V	6	219	36.5	25	5	CV
3000K <sup>+300</sup> <sub>-200</sub>	≥90	DC24V	6	253.2	42.2	25	5	CV
3500K <sup>+400</sup> <sub>-300</sub>	≥90	DC24V	6	223.2	37.2	25	5	CV
4200K <sup>+400</sup> <sub>-300</sub>	≥90	DC24V	6	214.2	35.7	25	5	CV
5300K <sup>+400</sup> <sub>-300</sub>	≥90	DC24V	6	220.8	36.8	25	5	CV

- The given color temperature is the temperature of finished product.
- The given data are typical values due to the tolerances of the production process and the electrical components, values for light output and electrical power can vary up to 10%.
- All products can be dimmed; the dimmer's voltage should conform to the rated voltage of the led light.  
The output frequency of the dimmer of the constant-current led light should be less than 2K Hz, and the output PWM can control the led light.

### Cable

Cable Type	Schematic Diagram	Specification	Core	Electrical Properties
PVC Cable		Inner core:24AWG	○ ○	Grey V+.White V

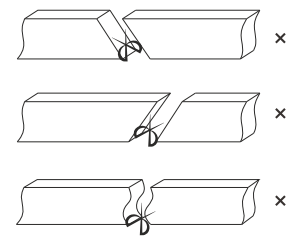
### Cutting Mark



**Remark:**  
The bottom of the led strip has transparent window, at the cutting mark the black marker is the cutting position



Use professional scissors to cut vertically



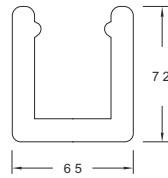
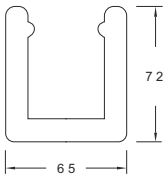
Please don't be feel free to cut and cut into an oblique angle or cambered section.

## Mounting Way

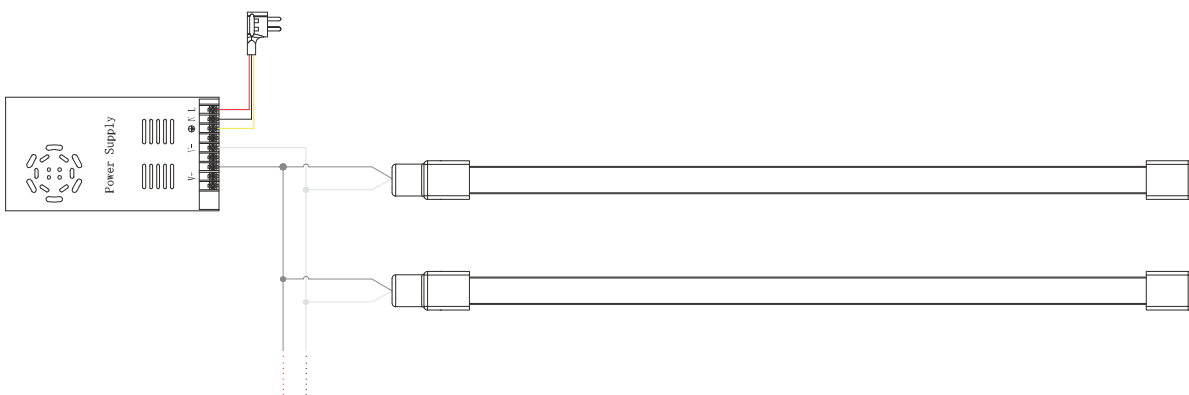


Aluminium Mounting Clips  
15x6.5x7.2mm(L x W x H)  
Accessories:  
Screw M2.3x16mm

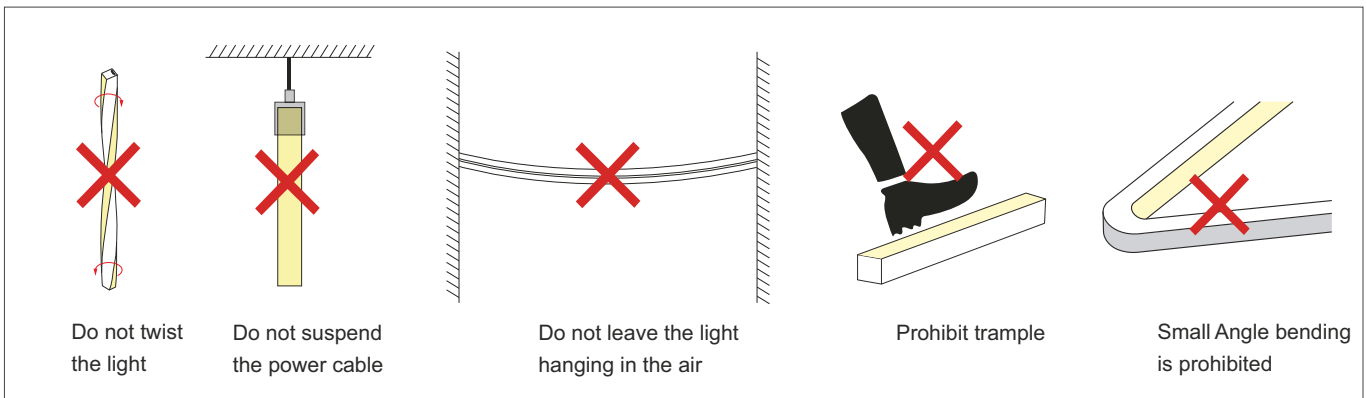
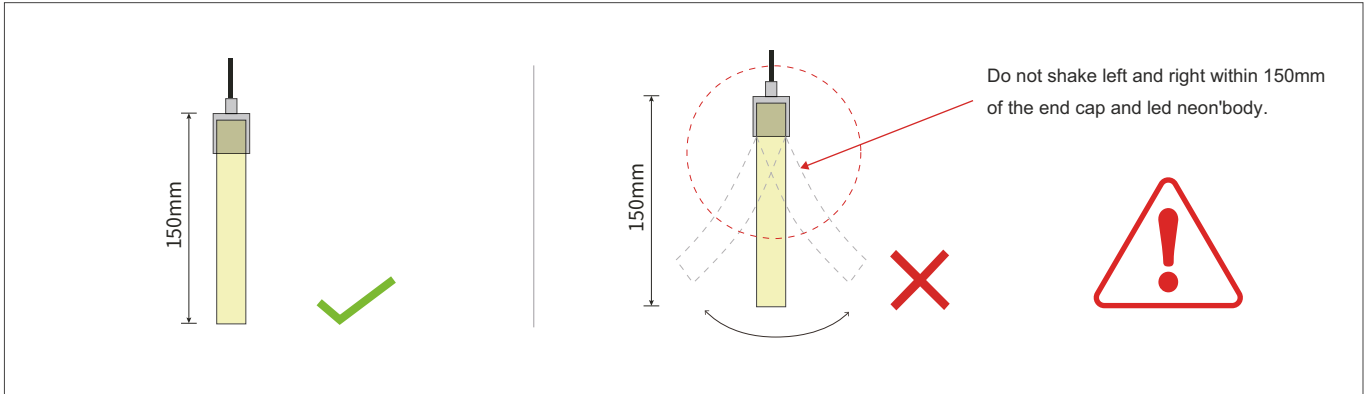
Aluminium Mounting Clips  
1000(±5)x6.5x7.2mm(L x W x H)  
Accessories:  
Screw M2.3x16mm



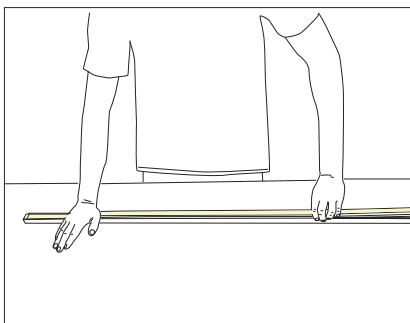
## Connection Diagram



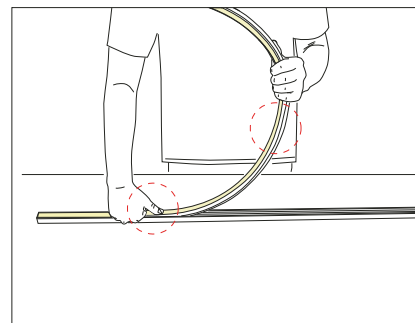
### Installation Precautions



### Put it in the profile

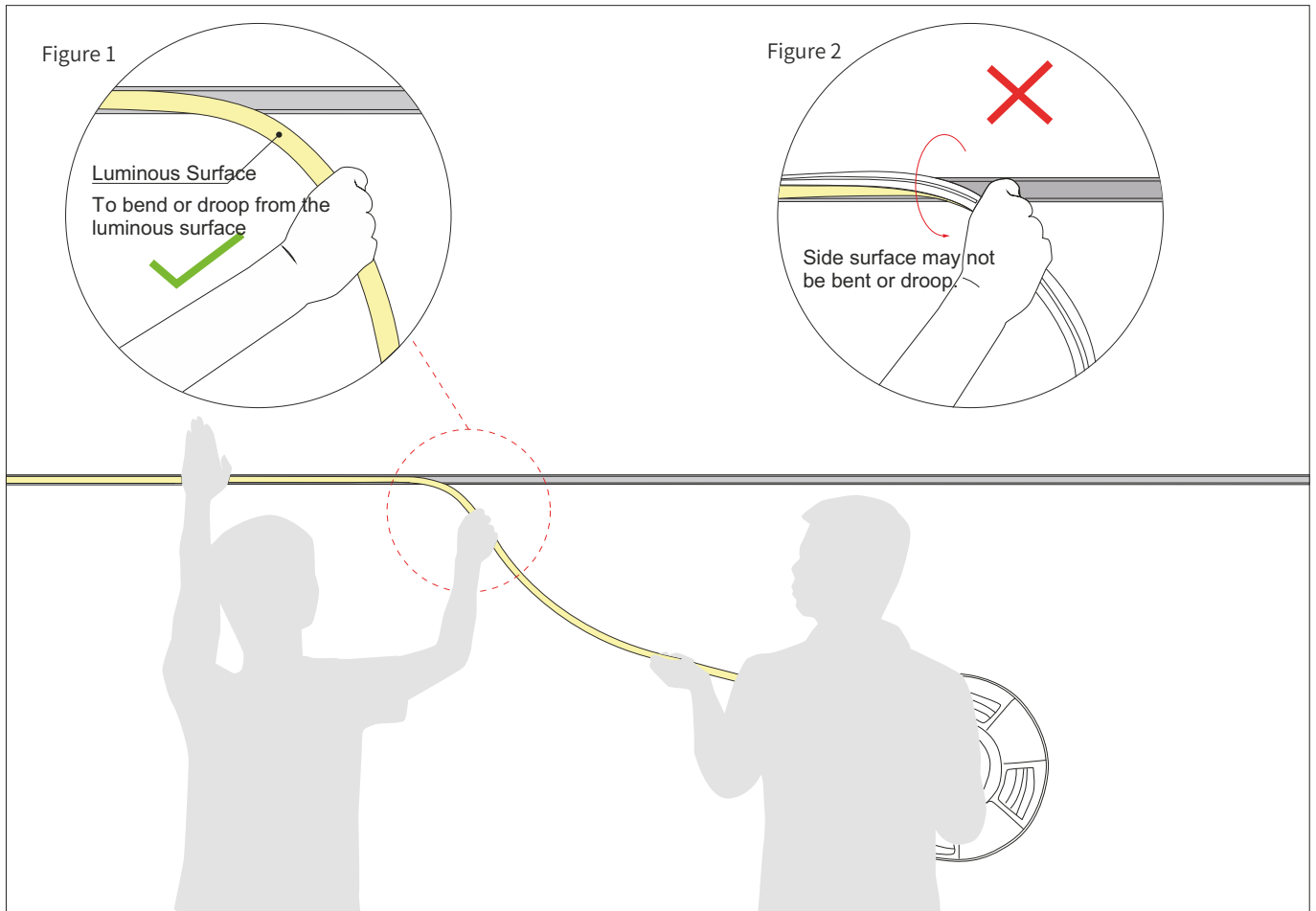


Please press the led strip with your palm to slowly insert the led strip into the groove, and gently straighten the led strip above the groove with your right hand.  
Try to keep the led strip in a flat state during the installation process.



Do not press the led strip with a single finger, it is easy to damage the internal parts of the led strip.  
The bent arc of the led strip should not be too large during installation.

**Installation Precautions - Side Mounted** (If the length of the light is more than 2 meters, two persons must work together to install it.)



**1. Installer:**

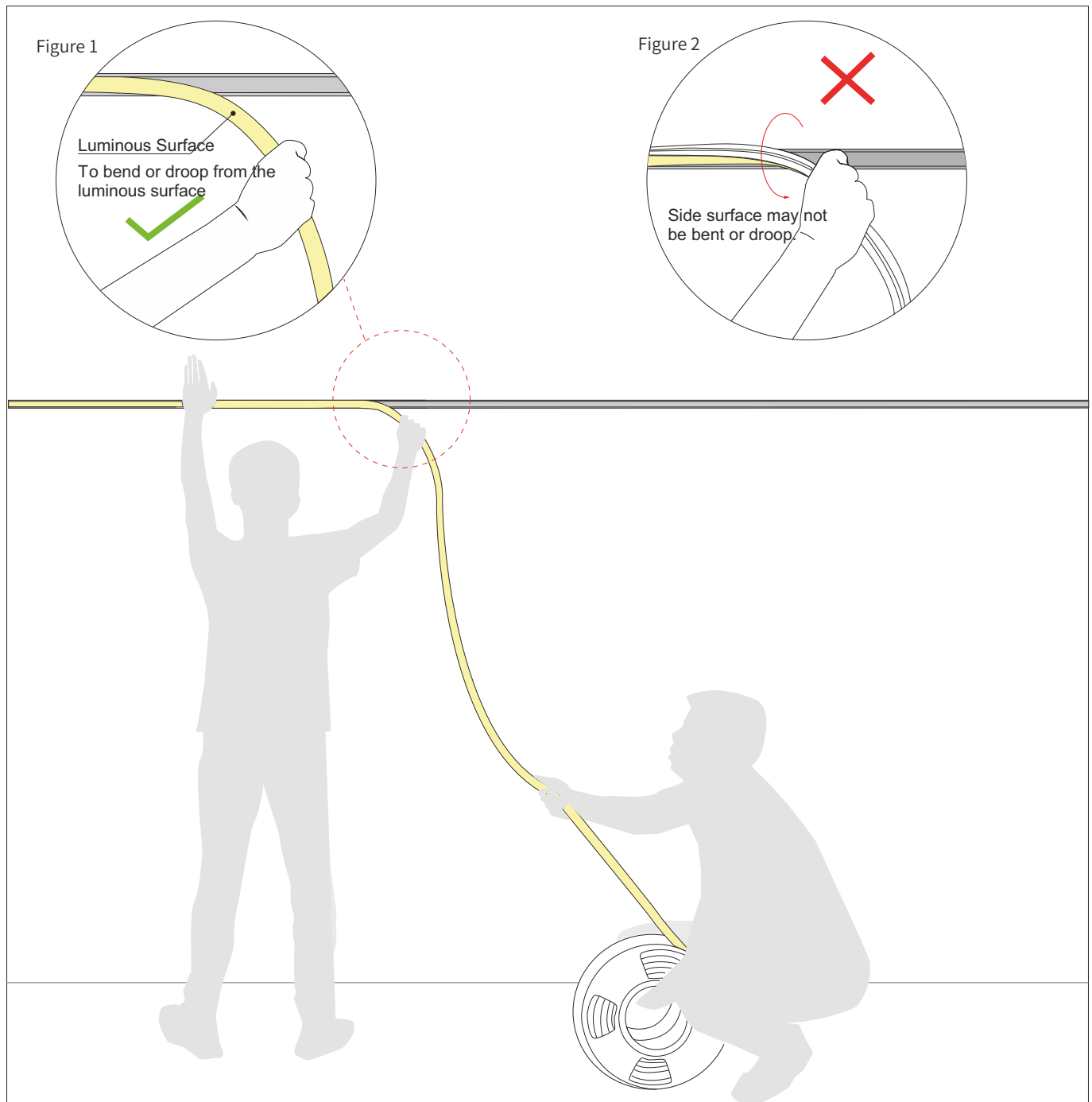
Press the light with the palm of the left hand to slowly load it into the slot. Straighten the light with right hand so that it droop it in the direction of your hand. See Figure 1.

Side surface may not be bent or droop, See Figure 2.

**2. Assistant:**

Cooperate with the installer to lift the reel of the light, and then slowly deliver the light to installer. Do not pull or twist the light during the installation.

**Installation Precautions - Side Mounted** (If the length of the light is more than 5 meters, two persons must work together to install it.)



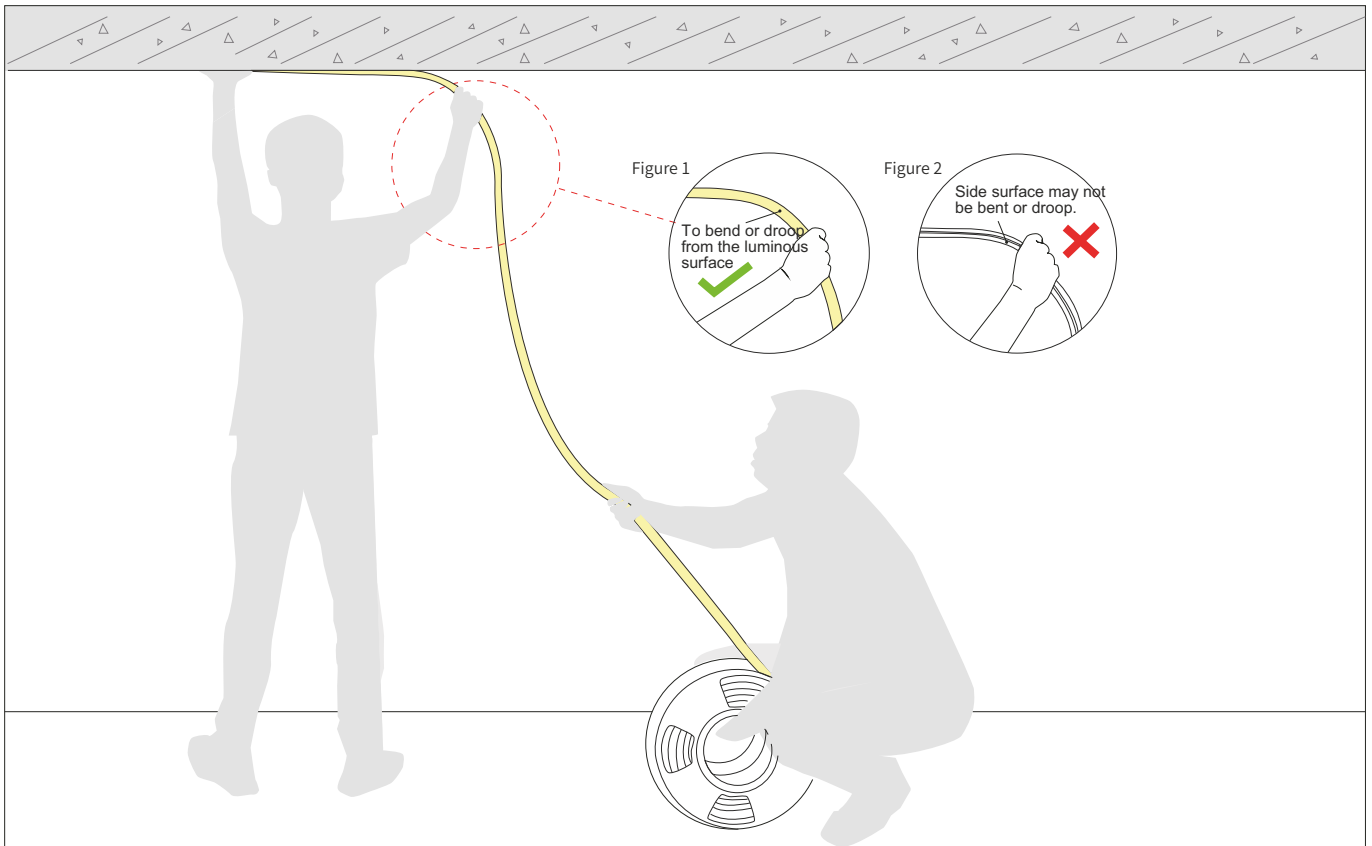
**1.Installer:**

Press the light with the palm of the left hand to slowly load it into the slot. Straighten the light with right hand so that it droop in the direction of your hand. See Figure 1.  
Side surface may not be bent or droop , See Figure 2.

**2.Assistant:**

Cooperate with the installer to slowly deliver the light to installer.  
Do not pull or twist the light during the installation.

**Installation Precautions - Top Mounted** (If the length of the light is more than 2 meters, two persons must work together to install it.)



**1.Installer:**

Press the light with the palm of the left hand to slowly load it into the slot. Straighten the light with right hand, hold it and rotate it 90° to droop it in the direction of your hand. See Figure 1. Side surface may not be bent or droop, See Figure 2.

**2.Assistant:**

Cooperate with the installer to slowly deliver the light to installer. Do not pull or twist the light during the installation.



## Notes

Cooperate with the installer to slowly deliver the light to installer. Do not pull or twist the light during the installation.

Current of the light	Specifications of the cable								
	L=1M	L=2M	L=4M	L=6M	L=8M	L=10M	L=12M	L=14M	L=16M
1A	AWG26	AWG23	AWG21	AWG18	AWG18	AWG17	AWG16	AWG15	AWG15
2A	AWG23	AWG21	AWG18	AWG16	AWG15	AWG14	AWG13	AWG12	AWG12
3A	AWG22	AWG18	AWG16	AWG14	AWG13	AWG12	AWG11	AWG11	AWG10
4A	AWG21	AWG18	AWG15	AWG13	AWG12	AWG11	AWG10	AWG9	AWG9
5A	AWG20	AWG17	AWG14	AWG12	AWG11	AWG10	AWG9	AWG9	AWG8
6A	AWG18	AWG16	AWG13	AWG11	AWG10	AWG9	AWG8	AWG8	AWG7
7A	AWG18	AWG15	AWG12	AWG11	AWG9	AWG8	AWG8	AWG7	AWG6
8A	AWG17	AWG15	AWG12	AWG10	AWG9	AWG8	AWG7	AWG7	AWG6
9A	AWG17	AWG14	AWG11	AWG10	AWG8	AWG7	AWG7	AWG6	AWG5
10A	AWG16	AWG14	AWG11	AWG9	AWG8	AWG7	AWG6	AWG6	AWG5

- The unused light should be sealed with the packaging bag to avoid prolonged exposure.
- Please use DC24V isolated constant voltage power supply with ripple voltage less than 5%. Using other types of power supply may damage the light or cause other safety risks.
- In practical application, 20% allowance should be reserved for power supply to ensure the stability of power supply.
- It is recommended that professionals connect the power supply. Do not connect the power supply with live power to avoid electric shock.
- Please confirm whether the voltage of the power supply is consistent with the voltage of the light; Pay attention to the positive and negative poles of the power cord, do not connect wrong, so as not to cause product damage;
- When multiple power supplies are used, ensure that the positive poles of the power supply are not connected in parallel. Otherwise, the power supply system may be unstable or damaged after long-term operation.
- If the actual application length exceeds the specified length, it will lead to overload, heating and uneven brightness of the light.
- During installation, please do not scratch, twist or bend the light irregularly. Otherwise, the light may be damaged beyond repair.
- To ensure the life and reliability of the light, please do not over bend the light, which will damage the product itself.
- To protect your eyes, please avoid staring at the glowing surface of the light for a long time.
- Non professionals are forbidden to install, disassemble and maintain the product.
- Do not use any acid or alkaline adhesive to fix the light (including but not limited to glass glue, etc)
- IP67 products are not suitable for long-term immersion in water; IP68 products are only customized by the factory. After cutting and processing by users themselves, there is a risk that IP68 protection level cannot be reached
- Because of the difference in structure, even if the same color temperature value, different sizes of light will look slightly different colors. Please confirm it before use.

Tests showed that methanol and benzenes will have yellowing effects on silicone.

In the newly decorated interior environment, epoxy floor paint, wall paint, wallpaper adhesive, various decoration materials or new furniture, they are likely to release of methanol and benzenes.

It is recommended to remove methanol and benzenes first, or ventilate for a period of time in the newly decorated interior environment before install the silicone neon light, to avoid affecting the silicone body.