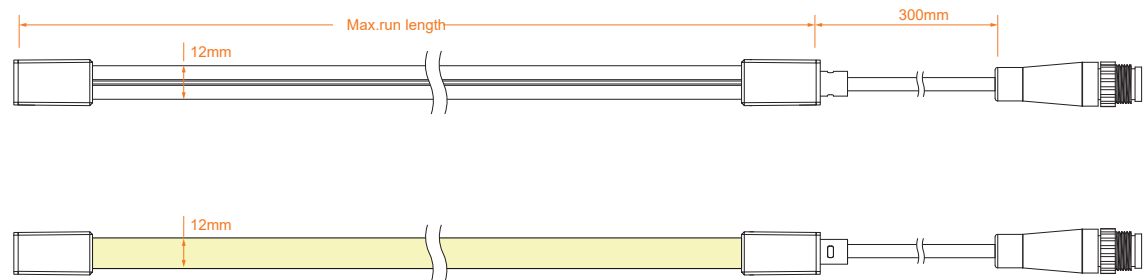


RLLNFTB1212H

High light transmittance, environmental protection grade silicone material, integrated extrusion molding process. Unique optical light distribution structure design, uniform lighting surface and no shadow. IP67 protection level, salt solution resistance, acids & alkalis, corrosive gases, fire and UV. Excellent toughness, simple and stylish appearance, delicate and unique

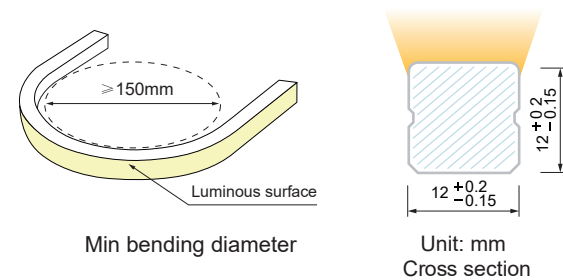


Dimension



Technical Data	
Voltage	DC24V
LED PIN Temperature	Max. 65 C
Storage Temperature	-25 C ~ 60 C
Ambient Temperature	Min.-25°C, Max (Table below)
CRI	≥90

Power(w/m)	5w/m	10w/m
Efficacy(lm/w)@4000K	95lm/w	93lm/w
Max Ambient Temperature	55 C	45 C



Note:

- Max. run length refers to single side feed in serial connection.
- The given data are typical values due to the tolerances of the production process and the electrical components, values for light output and electrical power can vary up to 10%.
- The given color temperature is the temperature of finished product.



Voltage 24v DC	UV Protection	Consistency One Bin
Length 5M	Waterproof Grade IP 67	Warranty 3 Years

Single color PARAMETER

CCT(K)	CRI	Voltage	Power(W)	Lumen (LM/M)	Efficiency (LM/W)	Unit Length (mm)	Max. Run Length (M)	CC/CV
2700K±150	≥90	DC24V	10	820	82	50	8(CC)	CC/CV
3000K±150	≥90	DC24V	10	880	88	50	8(CC)	CC/CV
3500K±200	≥90	DC24V	10	950	95	50	8(CC)	CC/CV
4000K±300	≥90	DC24V	10	930	93	50	8(CC)	CC/CV
5000K±300	≥90	DC24V	10	940	94	50	8(CC)	CC/CV
6000K±300	≥90	DC24V	10	950	95	50	8(CC)	CC/CV

Cable Entry

Front Cable Entry:

The cable could be hidden in all directions by the flexible design.

Integral end cap



Combined end cap



Silicone end cap



Side Cable Entry:

The cable could be perfectly hidden to achieve seamless light connection.

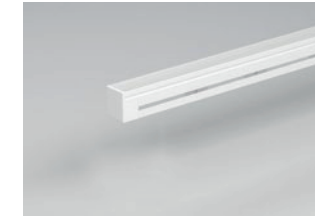


Bottom Cable Entry:

The cable could be perfectly hidden to achieve seamless light connection.



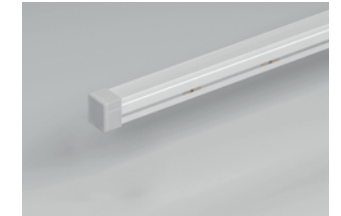
Integral closed end cap



Solder free closed end cap

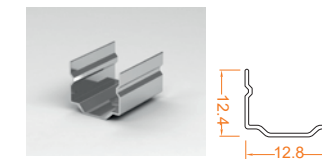


Silicone closed end cap



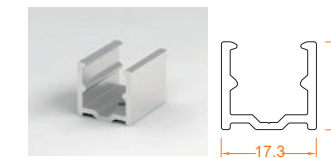
Accessories

Mounting Clips



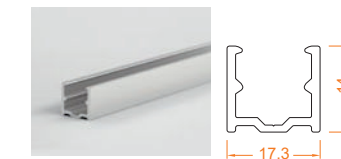
Dimension:
20x12.8x12.4mm

Aluminium Mounting clips



Dimension:
20x17.3x14mm

Aluminium Profile



Dimension:
1000(±5)x17.3x14mm

Suspension Installation



• Use with the profile